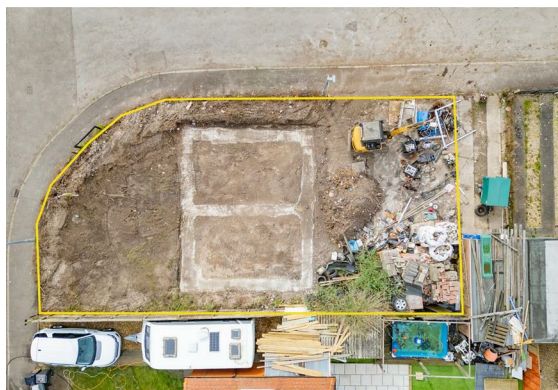


Parkway, Bridgwater
£190,000



- Plot with granted planning permission!
- Planning for 2 two bedroom houses!
- Footings in place!
- Approx 7000 bricks included!
- Sold with no onward chain!





Presenting this development opportunity, with footings already in and approximately 7000 bricks to be included.

An opportunity to build two semi-detached, two bedroom houses, with garages in a popular area with lots of local amenities within close proximity.

CIL payment paid. Utilities not connected.

The plans show two semi-detached houses with two slightly different designs but both offering two bedrooms, generous living space, kitchen, family bathroom, garden and garage.

The proposed buildings are highlighted in green & red on the site location image used in the marketing.

Full plans can be seen on the Somerset Council planning website, reference 08/07/00161.



Floor Plan

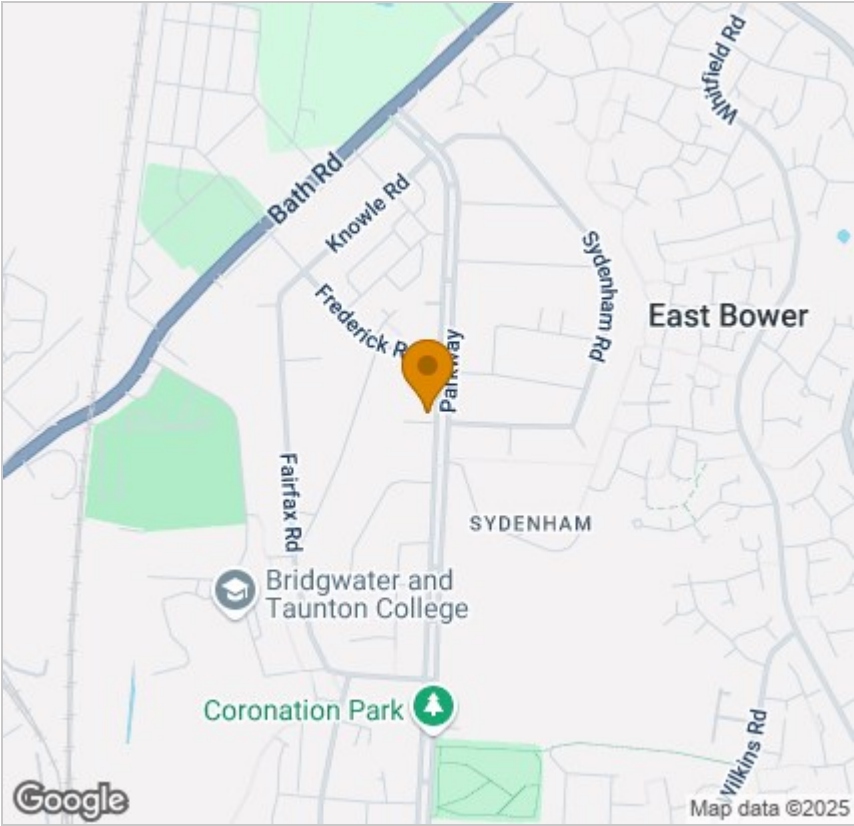


Viewing

Please contact our Sales Office on 01278 554333 if you wish to arrange a viewing appointment for this property or require further information.

Suite 1A, Wellworthys Business Centre Parrett Way, Bridgwater, Somerset, TA6 5LB
Tel: 01278 554333 Email: corbett@sykesmoore.co.uk <http://www.sykesmoore.co.uk/>

Area Map



Energy Efficiency Graph



These particulars, whilst believed to be accurate are set out as a general outline only for guidance and do not constitute any part of an offer or contract. Intending purchasers should not rely on them as statements of representation of fact, but must satisfy themselves by inspection or otherwise as to their accuracy. No person in this firms employment has the authority to make or give any representation or warranty in respect of the property.